

MODERN farmhouse style™

FRESH LOOKS
FROM RURAL ROUTES
TO CITY STREETS

DUTCH
DOORS &
OTHER
FARMHOUSE
FAVES
page 12

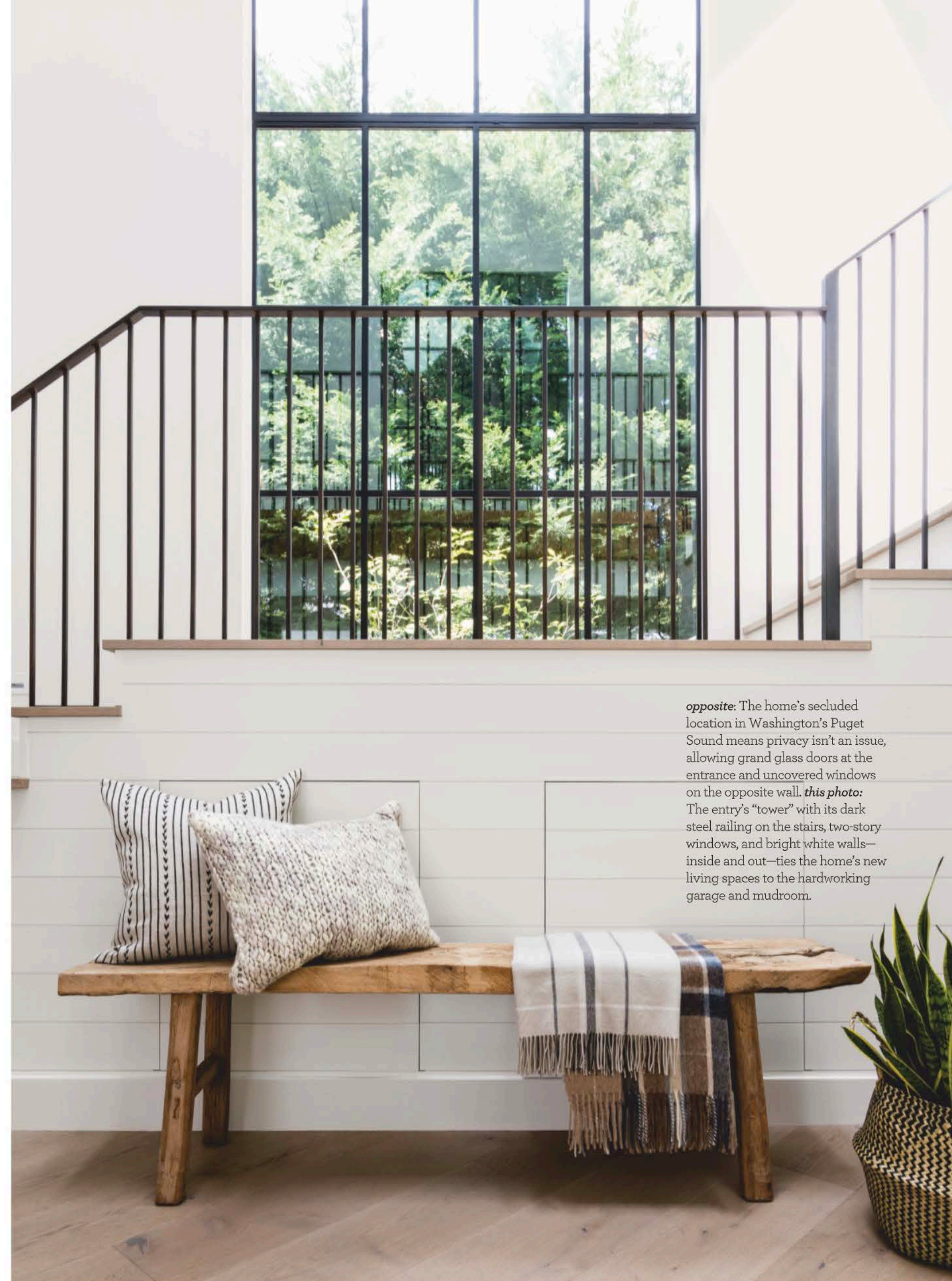
10 HOMES WITH
*cozy
character*

**DOWNSIZING
DONE RIGHT**

**MAKE AN OLD
FARMHOUSE LIVE
FOR TODAY**

relationship *building*

*An unexpected
collaboration on Bainbridge
Island, Washington,
proves that remodeling
can be joyful.*



opposite: The home's secluded location in Washington's Puget Sound means privacy isn't an issue, allowing grand glass doors at the entrance and uncovered windows on the opposite wall. **this photo:** The entry's "tower" with its dark steel railing on the stairs, two-story windows, and bright white walls—inside and out—ties the home's new living spaces to the hardworking garage and mudroom.



Bainbridge Island architect Dana Webber has worked on

many local projects. But few have provided her as much satisfaction as this extensive remodel along the coast of Puget Sound. It wasn't because of the amazing physical transformation of the original 1930s home. It wasn't because of the customized function that made family fun and entertaining a cinch. And it wasn't because of the natural materials that seamlessly blend with the secluded landscape. No, even with all of those achievements, the greatest satisfaction came from the process.

Webber collaborated with California interior designer Mindy Gayer and local builder Sharen Borgias of Fairbank Construction Co. "I don't think being a female design team was ever the intention," Webber says. "But I'm glad it turned out that way. I think when working with women on a design project you get a nice sensitivity. Women seem to think a little more about how people are impacted by the space."

The design team didn't begin the process focused on a particular style. Instead, the "transitional farmhouse" vibe, as Gayer calls it, developed from the functions of the spaces—casual, flowing, hardworking, and ultimately stylish. "This is about beauty, and it's about entertainment and food," Webber says.

The kitchen, family room, living room, and master bedroom all take in coastal views and glorious sunsets. The mudroom, storage room, and garage are situated to do their duty without stealing from the landscape. Upstairs is more kid-centric with bedrooms, bathrooms, and a large, comfy family room.

The entire home is designed to attain the ultimate goal of simply making family merry. The results are rooms that open to the outside and casually welcome guests of all ages, surfaces grounded by natural materials synonymous with the Pacific Northwest, and bright white walls that don't become gloomy even on the rainiest of days.

Webber recalls the highest compliment paid the creative team by the homeowner: "I sit in the house amazed. I look around and everything seems to be in exactly the right place. Nothing is out of place. There would not have been a better way to do any of it."

For resources, see page 96.



opposite: The comfortable vibe in the main-level family room is a reminder to family and guests to have fun and relax. Casual, inviting linen—a textile found throughout the house—covers the sectional as well as the oversize pendants. Large sliding doors open to outdoor living space. **above:** Dressed in dark hues, the mudroom handles the sand and mud that come with waterside living. Sturdy hooks, baskets, and drawers keep outdoor gear from cluttering other rooms.



hue cue

Carefully chosen colors keep neutral decor from becoming monotonous. Here's how interior designer Mindy Gayer selects hues.

TAKE CUES FROM OUTSIDE. *White walls are the anchor in this home, but in rooms where windows dominate, the accent colors are already determined by the view. Greens, tans, and blues can all be found in the surrounding woods and waterfront as well as in the living space.*

WORK FROM THE SAME PALETTE. *Style flows effortlessly through the house because the colors never stray far from one another. Blues grounded in gray mix in the kitchen and every connected room—whether on built-ins or furniture. Patterns are minimal and don't steal the show. "It all blends together," Gayer says. "Each room feels a little different but is still cohesive."*

USE COLOR JUDICIOUSLY. *Color never dominates here. Painted woodwork, including built-ins and kitchen cabinetry, creates focal points in each space but doesn't overwhelm. Calming hues create a casual environment throughout.*



opposite, clockwise from top left: A French La Cornue range integrates the room's stainless-steel appliances, dark pulls and knobs, and brass light fixtures. Cabinet hues of blue-grays and natural wood shelves echo the home's surroundings. The kitchen was designed for preparing family meals and entertaining friends—it provides some of the home's best sunset views. **this photo:** The dining room is one of the few rooms without direct access to the outdoors, which means it gets neglected in the summer. But dark upholstered host chairs and leather side chairs combined with a weighty oak table and statement light fixture create a stunning, modern space to gather indoors.



farm made modern

lesson number

1

An eclectic mix of styles—traditional, transitional, vintage, and contemporary—in furnishings and accessories gives rooms a collected (rather than off-the-rack) feel.

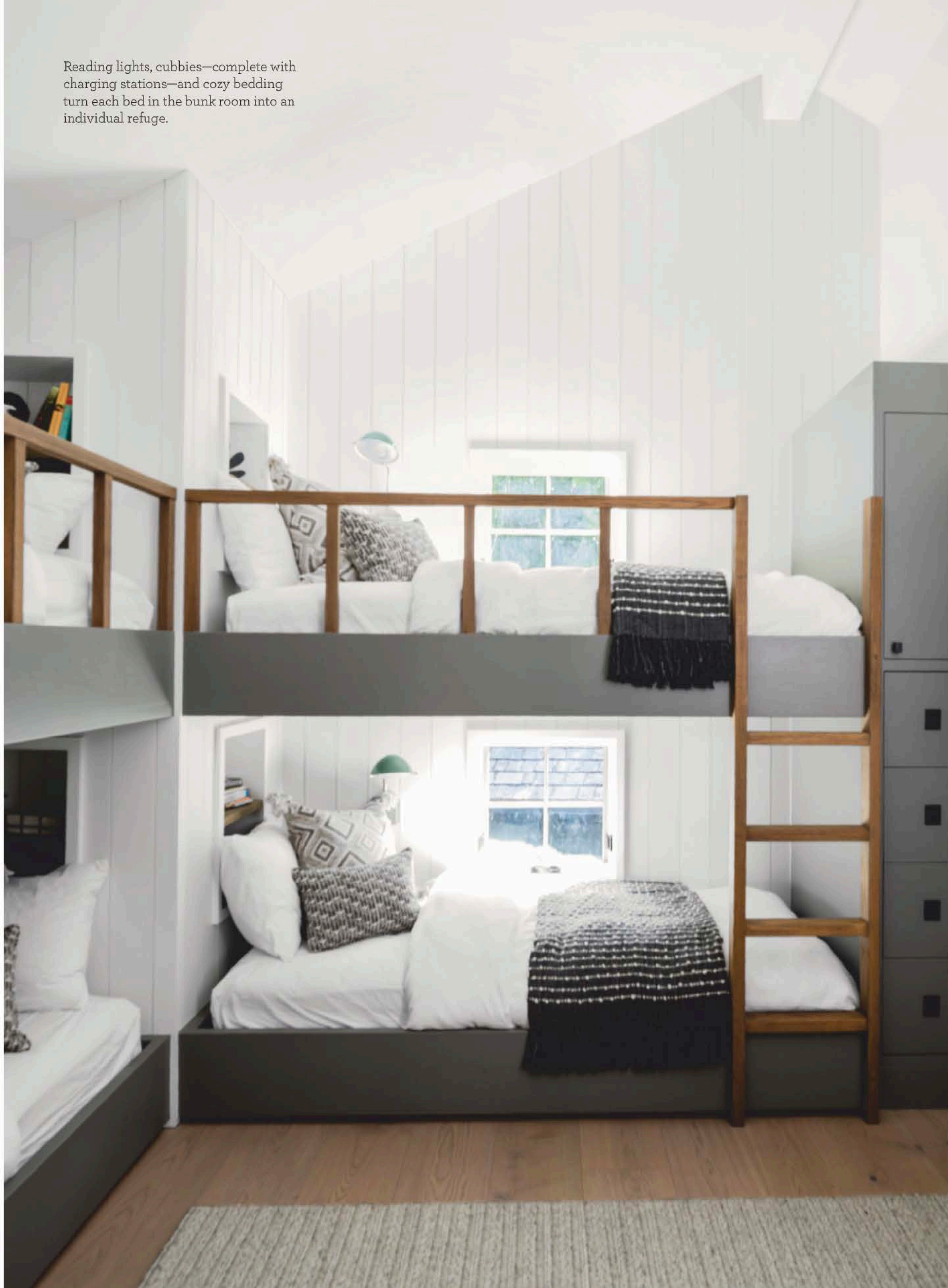


“The house is such a comfortable place, and that’s what it’s supposed to be. It’s really a place you don’t want to leave.”

—architect Dana Wekker

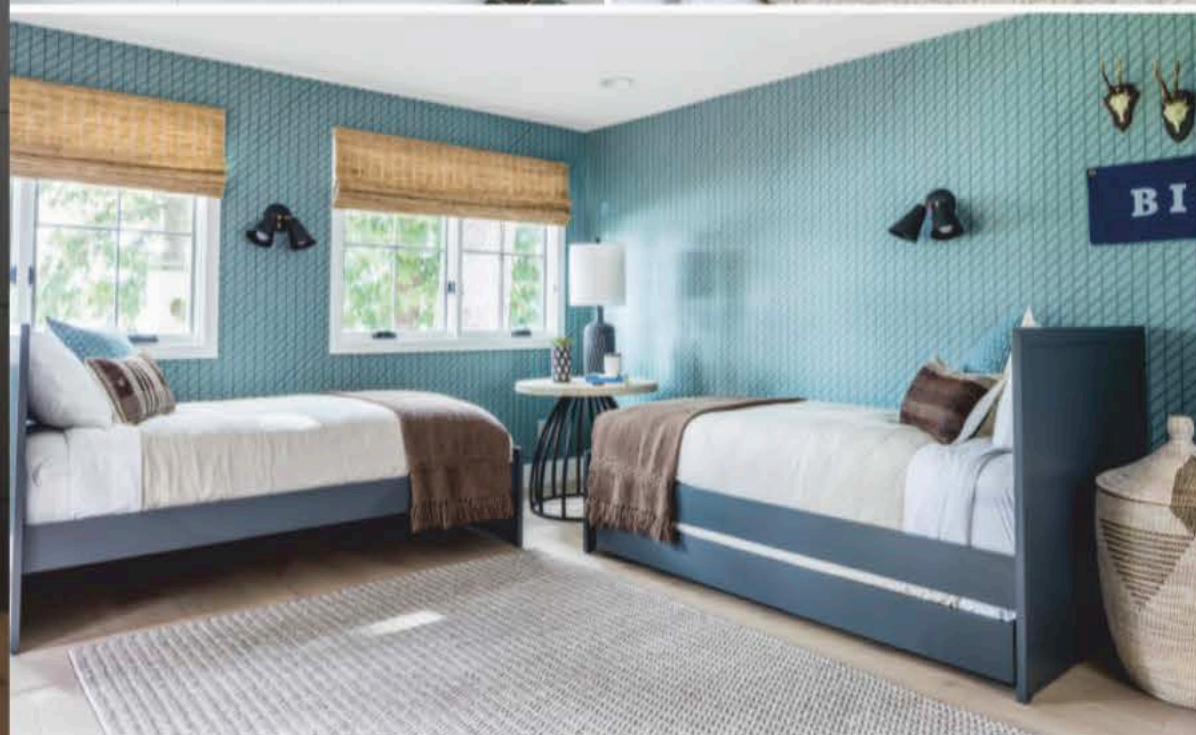
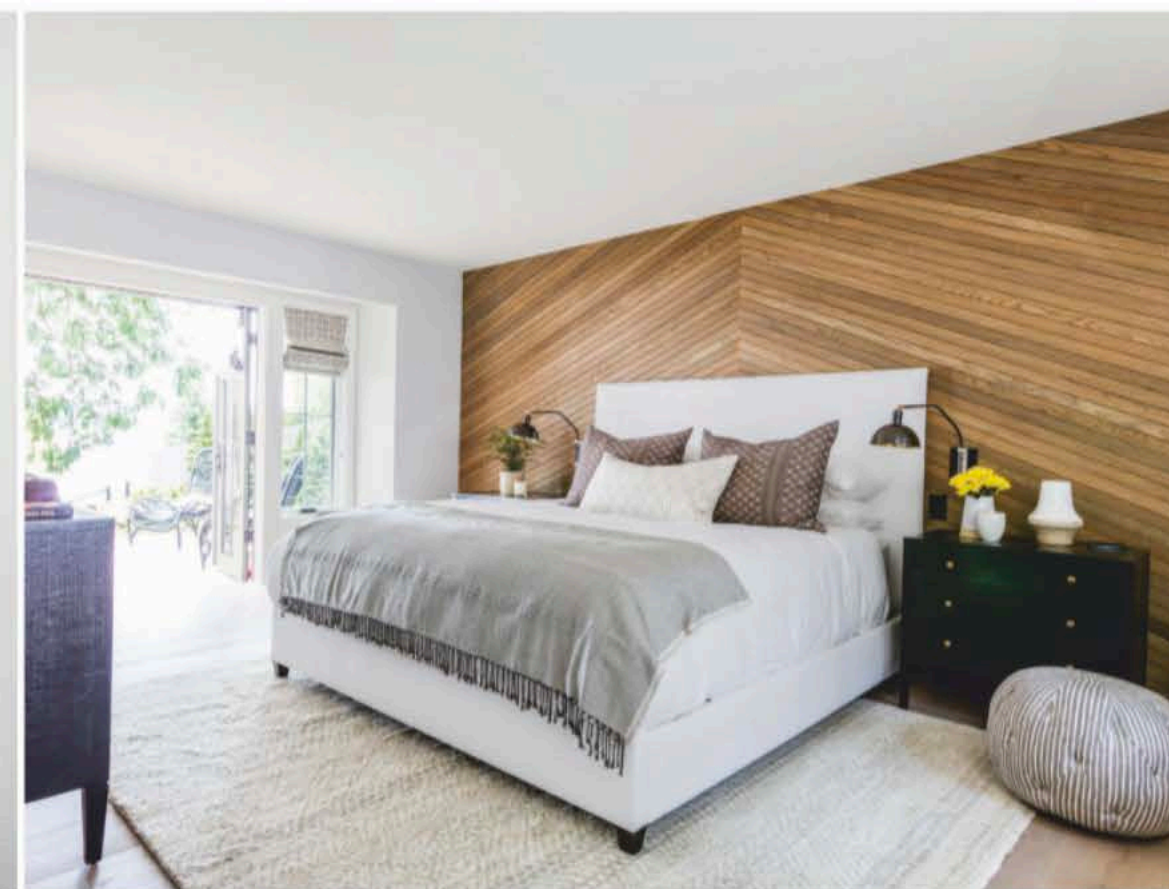
Low ceilings and a heavy fieldstone fireplace stole the life and the view from the living room before the renovation. Now, a raised ceiling and a wall of bifold glass doors make the room anything but lifeless.

Reading lights, cubbies—complete with charging stations—and cozy bedding turn each bed in the bunk room into an individual refuge.

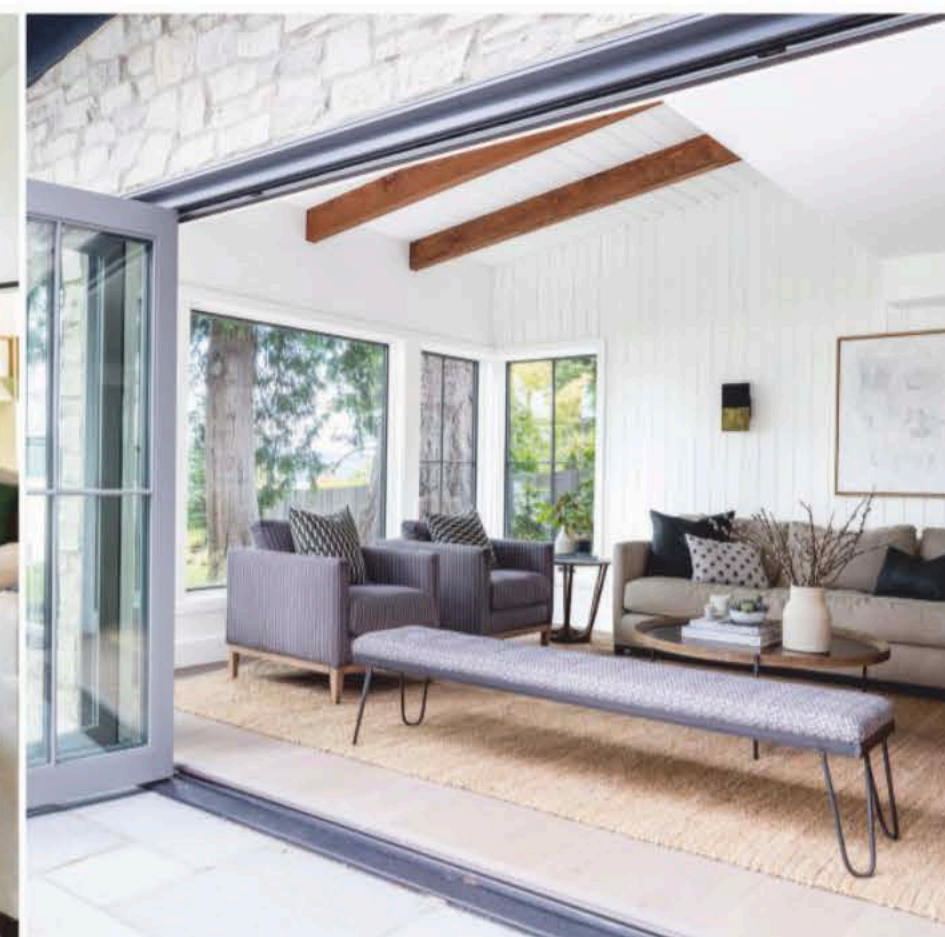


“When the homeowners found this property, it was about having the view and the environment shine. It’s their oasis.”

—designer Windy Gayer



Clockwise, from top left: Durable concrete countertops and black hardware are designed for young users in the bathroom between the bunk room and the upper-level family room. The main-level master bedroom enjoys a connection to nature. Wallpaper gives the guest room added personality. Facing twin beds—one with a trundle—invite nighttime chatter and giggles.



opposite: The dark-painted built-ins create character in the space leading to the home office, a late addition to the design plan. *above left:* The kid-friendly upper-level family room has all the hideaways necessary to store electronics, movies, and games. Treetop views from the windows and balcony inspired the green hues decorating the built-ins and pillows. *above right:* When the bifold doors between the outdoor dining space and the living room are pushed aside, family and guests can circulate effortlessly. *below left:* The often-used outdoor dining area is as efficient as it is welcoming. Kitchen windows fold back like the nearby living room doors to allow food to easily be served. *below right:* The white “tower” entry is a counterpoint to the dark shades and natural materials of this waterfront home.

